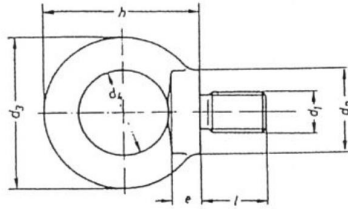


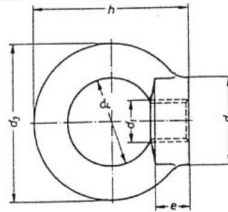
Metric DIN 580 Lifting Eye Bolts



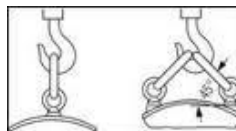
D1	L	D2	D3	D4	h	e	Load KG (Single Lift)	Load KG (Double Lift)
M6	11	16	27	16	31	6	100	
M8	13	20	36	20	36	6	150	95
M10	17	25	45	25	45	8	230	170
M12	20.5	30	54	30	53	10	340	240
M16	27	35	63	35	62	12	700	500
M20	30	40	72	40	71	14	1200	830
M24	36	50	90	50	90	18	1800	1270
M30	45	65	108	60	109	22	3600	2600
M33	45	65	108	60	109	22	4300	3100
M36	54	75	126	70	128	26	5100	3700
M42	63	85	144	80	147	30	7000	5000
M48	68	100	166	90	168	35	8600	6100

M33 this size is not DIN standardised

Metric DIN 582 Lifting Eye Nuts



D1	D2	D3	D4	h	e	Load KG (Single Lift)	Load KG (Double Lift)
M6	16	27	16	31	8	100	
M8	20	36	20	36	8.5	150	95
M10	25	45	25	45	10	230	170
M12	30	54	30	53	11	340	240
M16	35	63	35	62	13	700	500
M20	40	72	40	71	16	1200	830
M24	50	90	50	90	20	1800	1270
M30	65	108	60	109	25	3600	2600
M36	75	126	70	128	30	5100	3700
M42	85	144	80	147	35	7000	5000
M48	100	166	90	168	40	8600	6100



Single Lift & Double Lift